

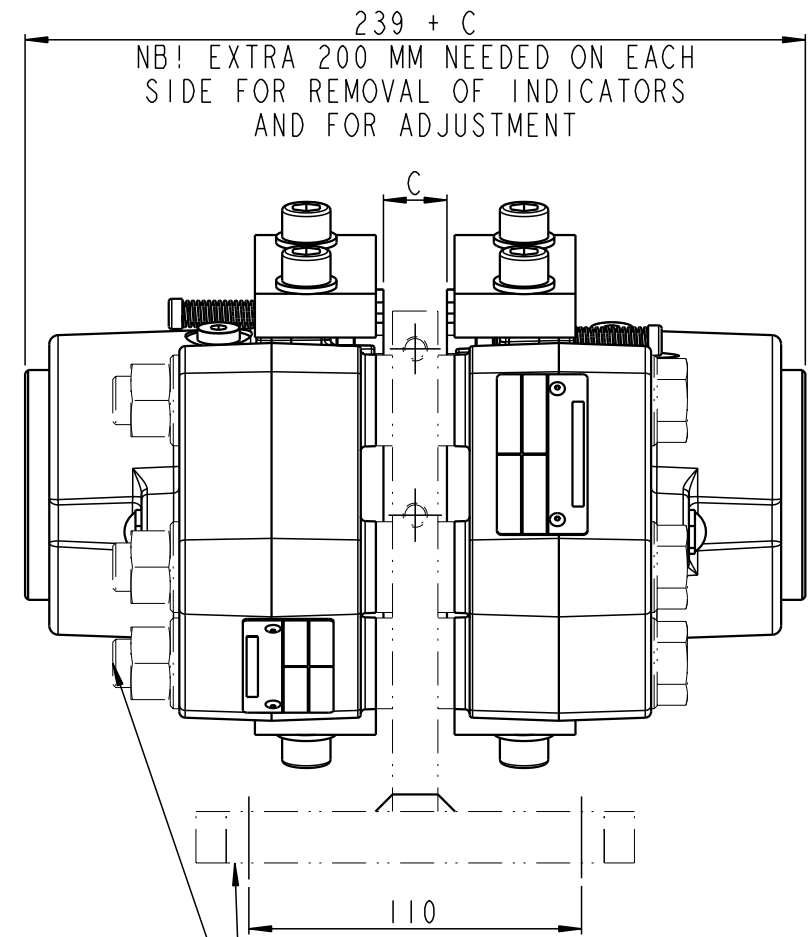
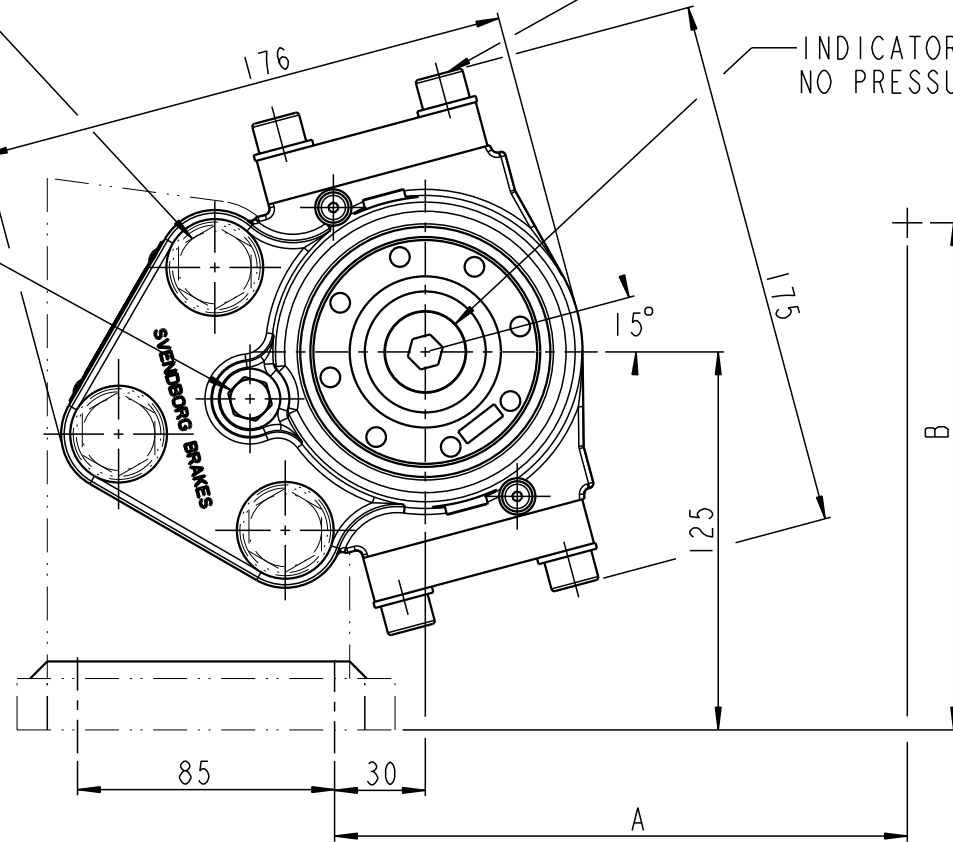
REV. A 96821 SFR 05.03.2014
 REV. B 97472 CAS 27.11.2014

BOLTS M16 GRADE 8.8
 Mv = 155±10 Nm
 WITH MoS2

DRAIN PORT
 G1/8

BOLTS M10 GRADE 80
 Mv = 44±6 Nm
 DRY

INDICATOR PLUG G1/2
 NO PRESSURE



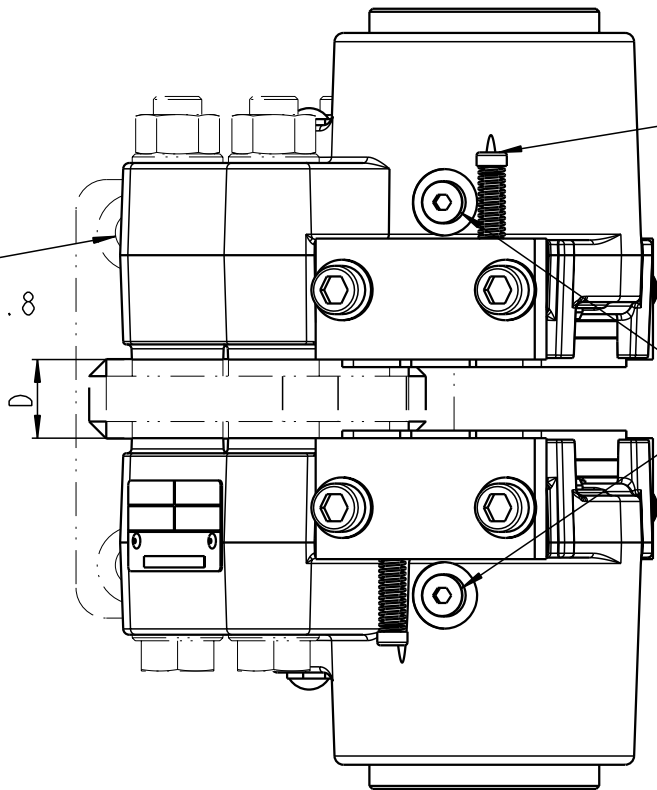
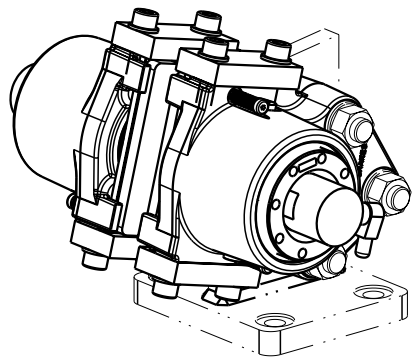
BRACKET AND MOUNTING BOLTS
 ARE NOT INCLUDED IN BRAKE

BOLTS M5
 Mv = 5±1.2 Nm
 DRY

Ø14 (4x)
 FOR BOLT M12 GRADE 8.8
 Mv = 64±6
 WITH MoS2

PRESSURE PORT
 G1/8

DISTANCE FROM CENTER OF BRAKE DISC (R = RADIUS OF BRAKE DISC)
 A = 0.966 (R-35) + 30
 B = 0.259 (R-35) + 125
 C = DISC THICKNESS
 D = MOUNTING SURFACE WIDTH = C + 7
 MOUNTING DRAWING, SEE DRAWING 490-1244
 WEIGHT: 18.5 KG. INCL. BRAKE PADS (EXCL. BRACKET AND BOLTS)



Tolerances for internal and external radii, angles and chamfers according to: ISO 2768 - mK		✓ Indicates Ra in µm	All dimensions in mm	Drawing status
Description		BSFI 200-S-400 HIGH PRESSURE		Released
Drawn by RCH	Date: 25.01.2010	Drawing No. 490-4211		
SVENDBORG BRAKES		Revision B		Scale 2:5 (A3)
		Sheet 1 of 1 sheets		

Svendborg Brakes reserves the right to revise this document without prior notification or obligation

CONFIDENTIAL

RELEASED
 by christian.stevenson

Svendborg Brakes ApS, Denmark
 CVR / VAT: 13256438
 www.svendborg-brakes.com

This drawing / document remains the property of Svendborg Brakes and must not be copied without our prior written permission, and the contents thereof must not be disclosed to any third party, nor be used for any unauthorized purpose. Legal action will be taken in the event of contravention.