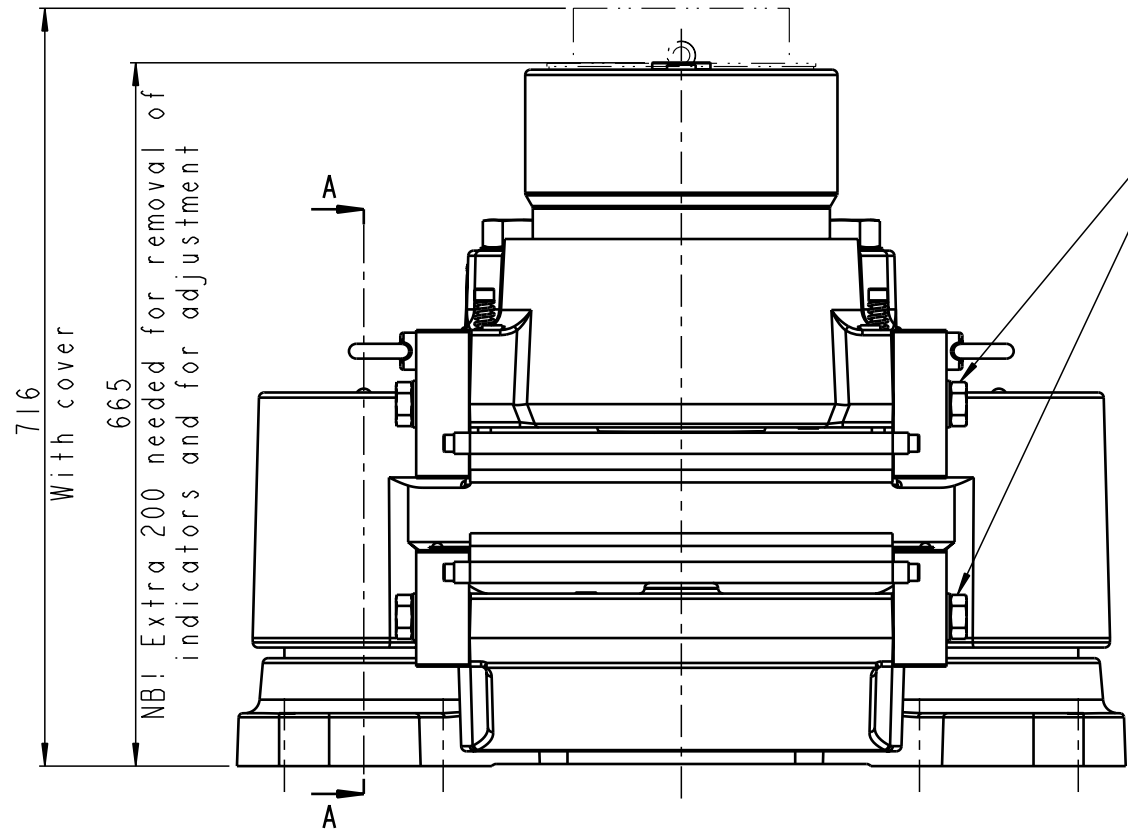


Denmark: Jernbanevej 9, 5882 Vejstrup, Denmark
 Germany: Kirchnerstrasse 42, D-32257 Bünde, Germany
 This drawing / document remains the property of Svendborg Brakes A/S and must not be copied without our prior written permission, and the contents thereof must not be disclosed to any third party, nor be used for any unauthorized purpose. Legal action will be taken in the event of contravention.

Rev. D 92942 RRH 08.08.2005
 Rev. E 94745 SFR 22.04.2010
 Rev. F 94760 SFR 03.05.2010

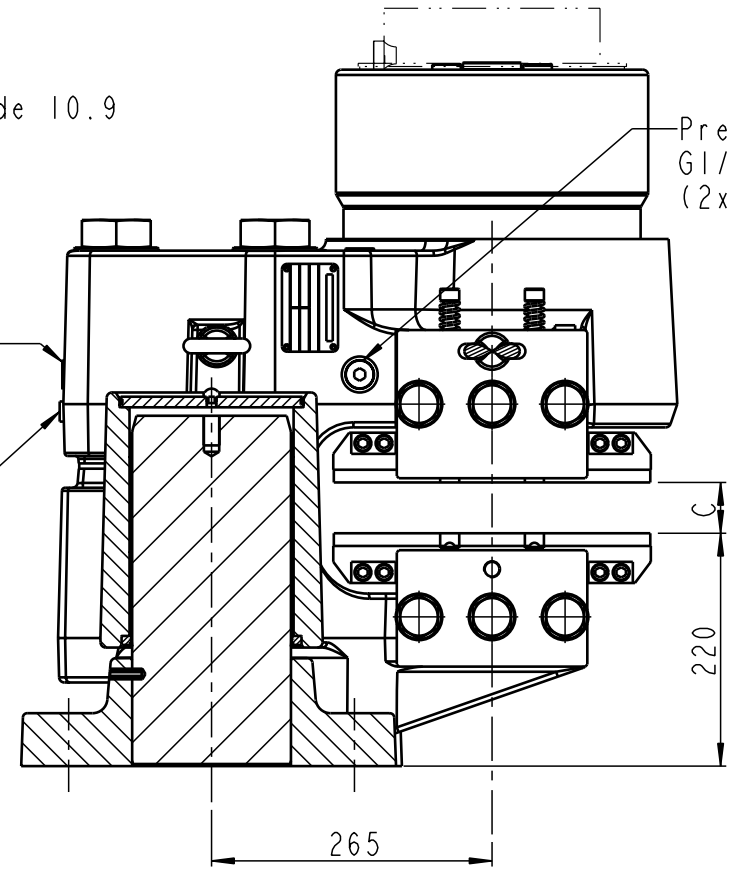


M24 (12x) grade 10.9
 $M_v = 740 \pm 30 \text{ Nm}$
 With MoS2

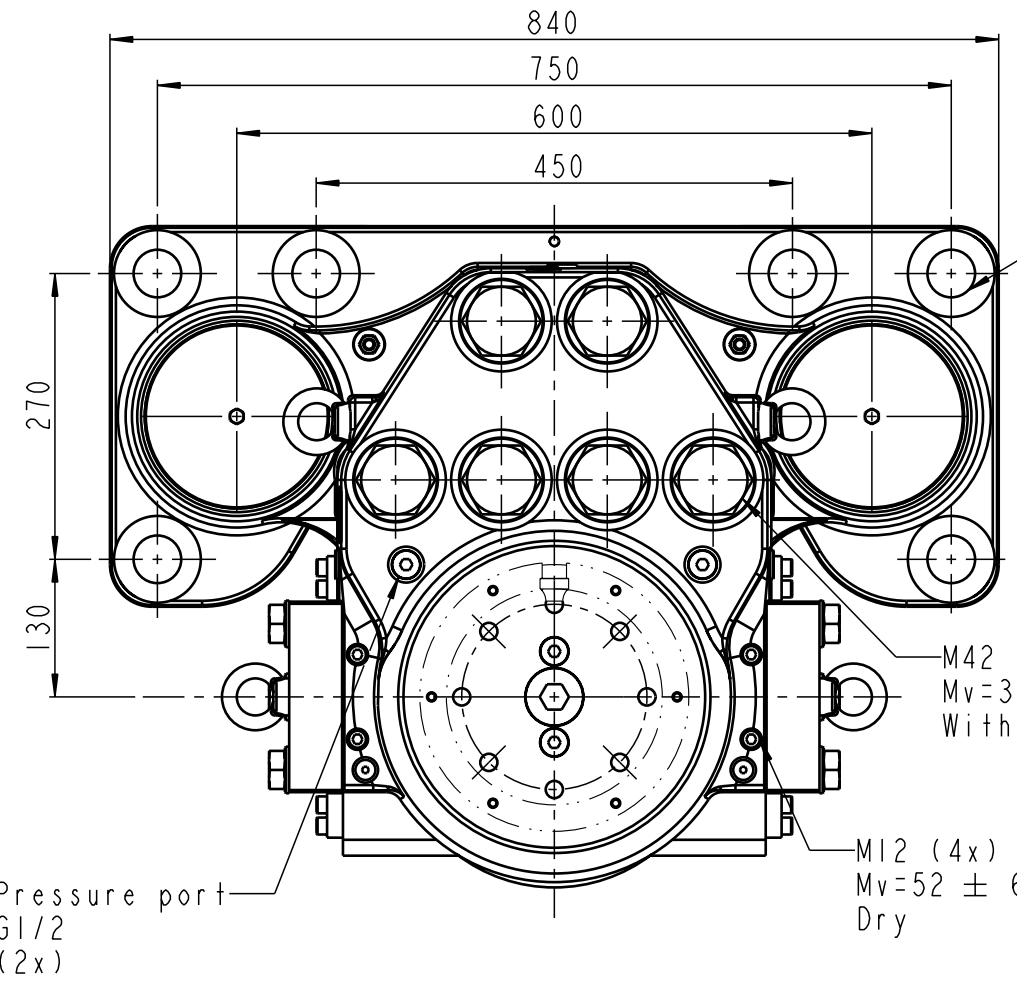
Pressure port
 G1/2 (2x)
 Drain port
 G1/4

Pressure port
 G1/2 (2x)

Brake disc thickness = 40-70
 Brake can move on shafts:
 20 upwards and 5 downwards



SECTION A-A

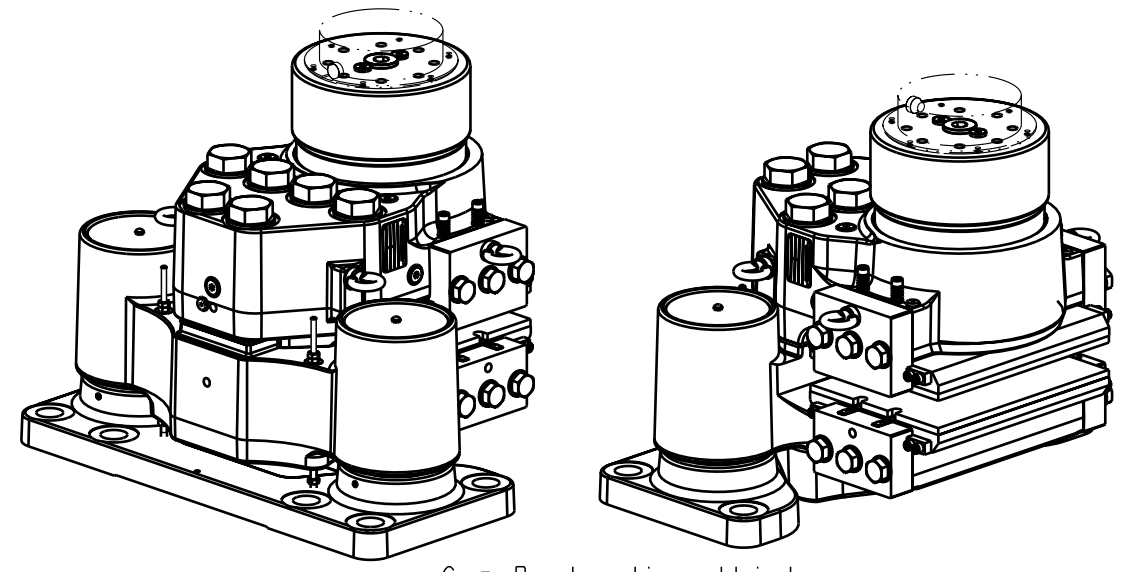


For M42 (6x) grade 10.9

M42 (6x) grade 10.9
 $M_v = 3700 \pm 40 \text{ Nm}$
 With MoS2

M12 (4x) grade 8.8
 $M_v = 52 \pm 6 \text{ Nm}$
 Dry

Pressure port
 G1/2 (2x)



C = Brake disc thickness
 Mounting drawing, see drawing 490 3336
 Weight: Approx. 840 kg incl. brake pads

Tolerances for corner radii, angles, chamfers and threads according to: DS/EN 22768 - m		✓ Indicates Ra in μm	All dimensions in mm	Accep. for prod. by
Description		BSFB 600-MSxxS-200		
Drawn by RRH	Date: 03/44	DrwtDesign checked by		
		Revision F		
		Scale 7:50 (A3)		
		Sheet 1 of 1 sheets		
Drawing No.		490-3162		

Svendborg Brakes A/S reserves the right to revise this document without prior notification or obligation