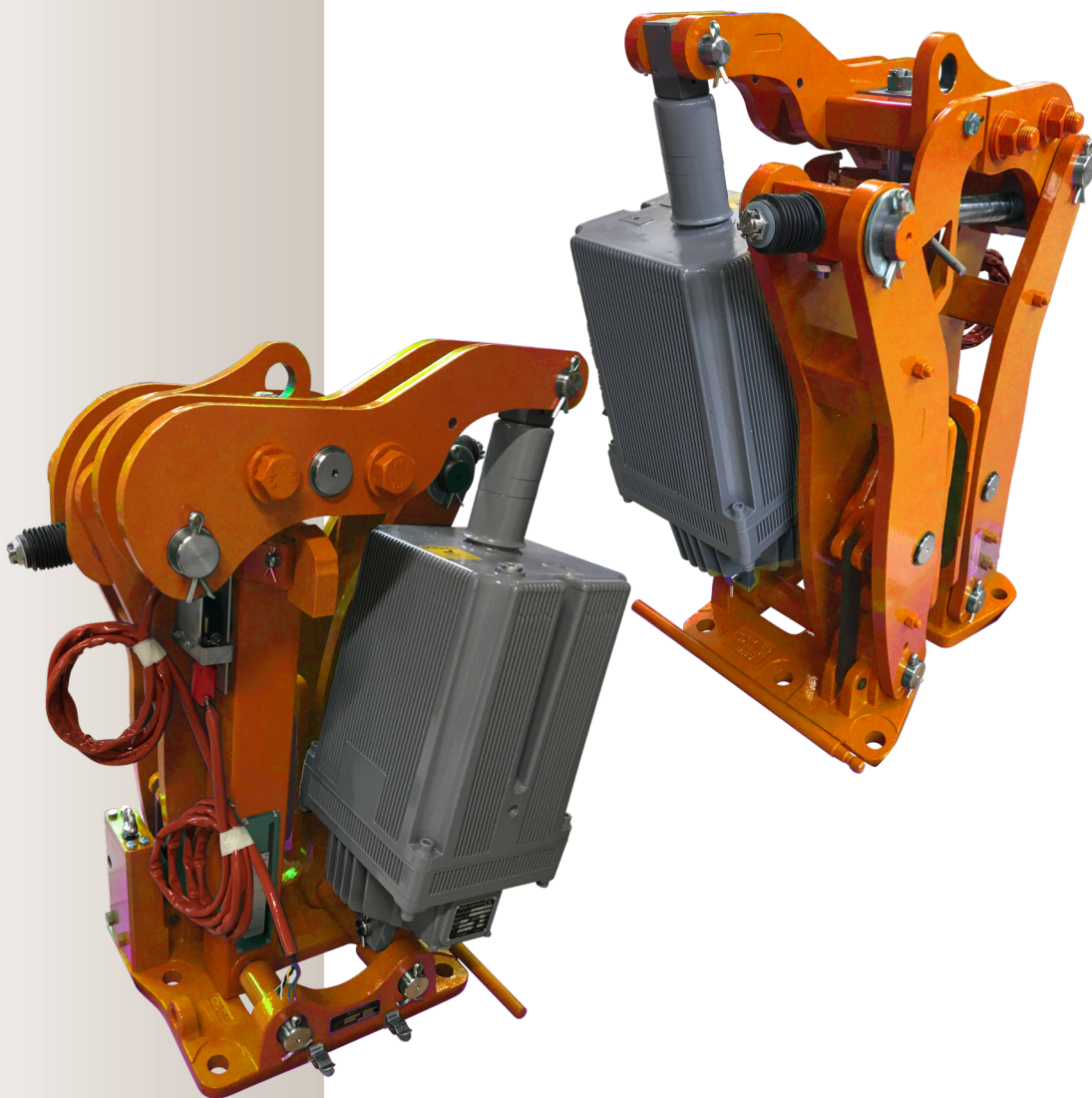


Svendborg Brakes

Disc Brake

FAV41



Caliper FAV 41-VS

Fail safe
 Spring application / Thrustor release
 Auto centering
 Lining wear compensation
 Thrustor stroke control switch
 Opening proving switch
 Stainless steel pins
 Manual release lever for FAV411/412-VS
 Manual release system for FAV413-VS

Operating conditions:

- Ambient temperature: -20°C to +50°C
- Relative humidity ≤ 70%

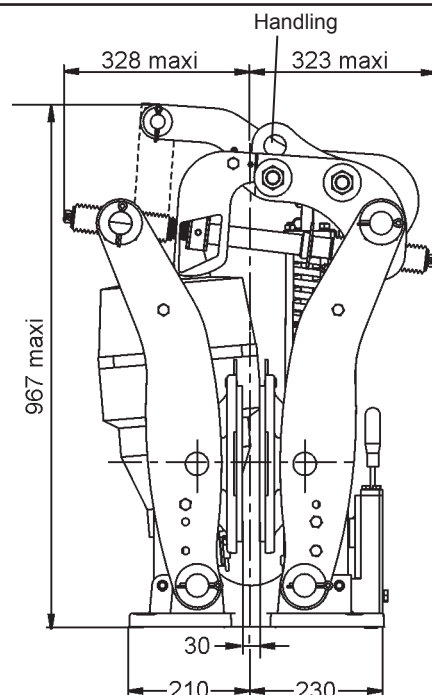
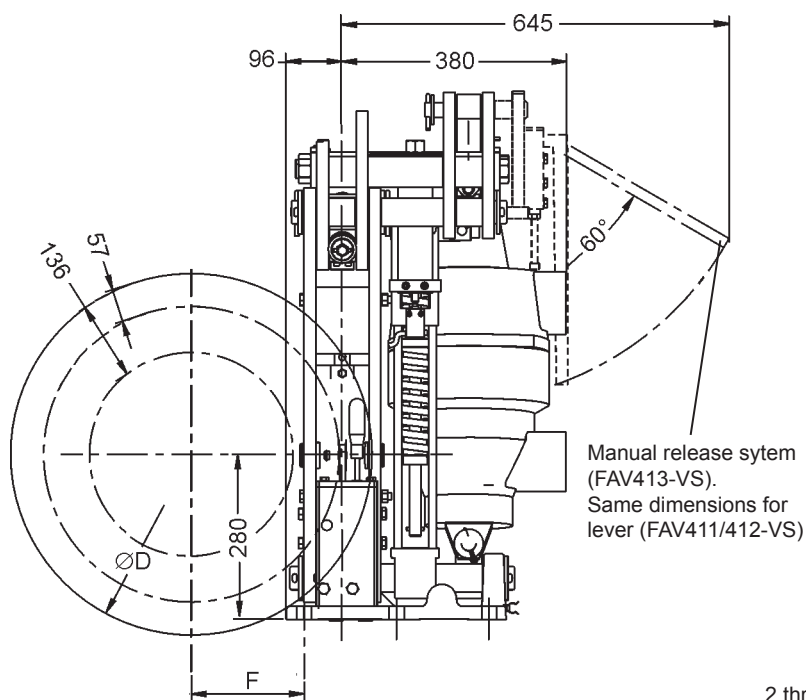
Other conditions: consult Svendborg Brakes

Use:

- Service brake

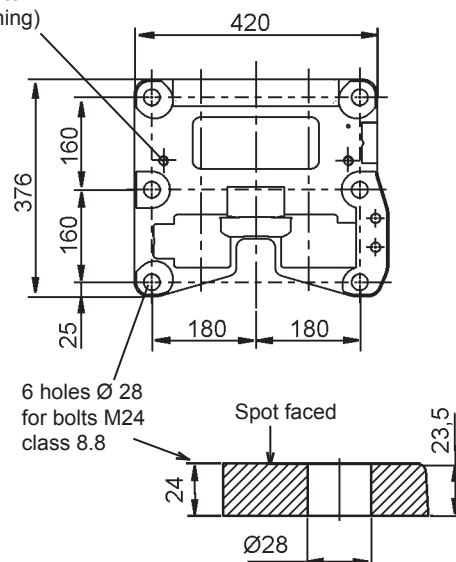
Options :

- Lining full wear control switch
- MSF : Monitoring modul for FAV



Weight without thrustor : 180 kg / Weight with thrustor : 222 kg
 Torque and effort values are subject to a variation of ±10%
 The disc run-out must not exceed 0,08 % of the maximum radius
 and the disc axial displacement must be smaller than 0,5 mm.

2 threads M16
 (for on-site
 positioning)



Discs (ØD)		445	495	550	625	705	795	995
Nominal torque, 1 caliper* (N.m)	FAV413 VS-III-3010	-	-	-	9700	11200	12950	16700
	FAV412 VS-III-2010	-	4960	5650	6600	7650	8800	-
	FAV411 VS-III-1310	2650	3050	3500	4100	4750	5450	-
Maximum disc speed for nominal torque (rpm) **		2100	1900	1800	1500	1300	1200	900
F (mm) (F=D/2-130)		93	118	145	183	223	268	368
Maximum reaction on shaft (N)	FAV413 VS-III-3010	38000						
	FAV412 VS-III-2010	26000						
	FAV411 VS-III-1310	16000						

* Nominal torque is adjustable from 100% to 70% (nominal coefficient of friction of $\mu = 0.4$)
 ** For higher speeds, consult Svendborg Brakes

Due to continuous development and improvement, all dimensions and characteristics are subject to change without notice.

Installation and maintenance Leaflet No. M08294-02

Spare parts

No. S09294-02

T03524-02