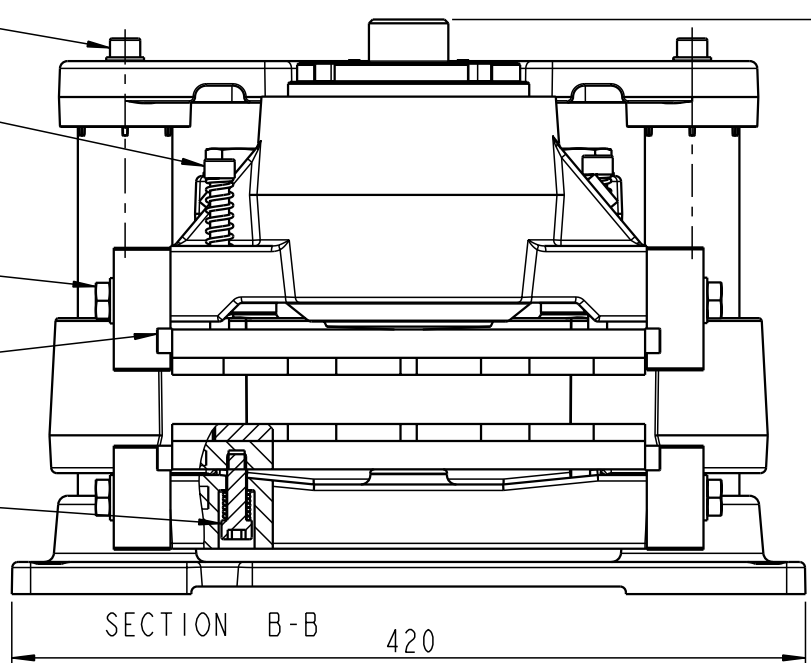


SVENDBORG BRAKES, DENMARK  
 CVR / VAT: 13256438  
 WWW.SVENDBORG-BRAKES.COM

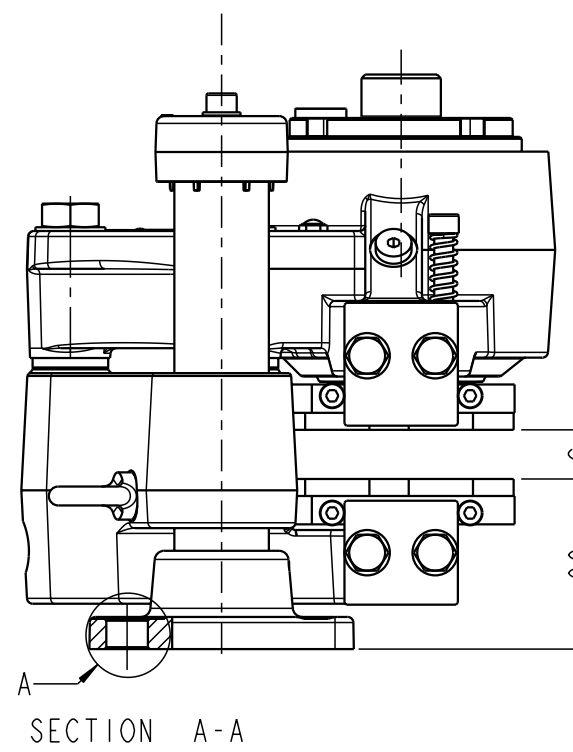
THIS DRAWING/DRAWING DOCUMENT REMAINS THE PROPERTY OF SVENDBORG BRAKES AND MUST NOT BE COPIED WITHOUT OUR PRIOR WRITTEN PERMISSION. AND THE CONTENTS THEREOF MUST NOT BE DISCLOSED TO ANY THIRD PARTY. NOR BE USED FOR ANY UNAUTHORIZED PURPOSE. LEGAL ACTION WILL BE TAKEN IN THE EVENT OF CONTRAVENTION.

Rev. D 100066 MAE 24.05.2018  
 Rev. E 100416 RMJ 14.01.2019  
 Rev. D 102880 RMJ 25.08.2023

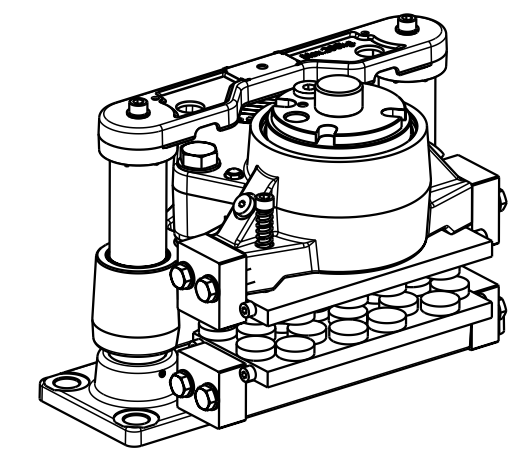
- BOLTS M10 CLASS 8.8  
 $M_v = 44 \pm 6\text{Nm}$   
 DRY
- BOLTS M10 CLASS 8.8 / A2 (2x)  
 $M_v = 27 \pm 2\text{Nm}$   
 DRY
- BOLTS M12 CLASS 10.9  
 $M_v = 91 \pm 8\text{Nm}$   
 WITH MoS2
- BOLTS M8 CLASS 8.8  
 $M_v = 23 \pm 2\text{Nm}$   
 DRY
- BOLTS M10 CLASS 8.8 / A2 (2x)  
 $M_v = 27 \pm 2\text{Nm}$   
 DRY



NB! EXTRA 120 NEEDED FOR  
 REMOVAL OF INDICATORS AND  
 FOR ADJUSTMENT

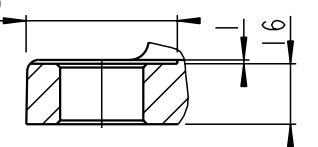


SEE DETAIL A



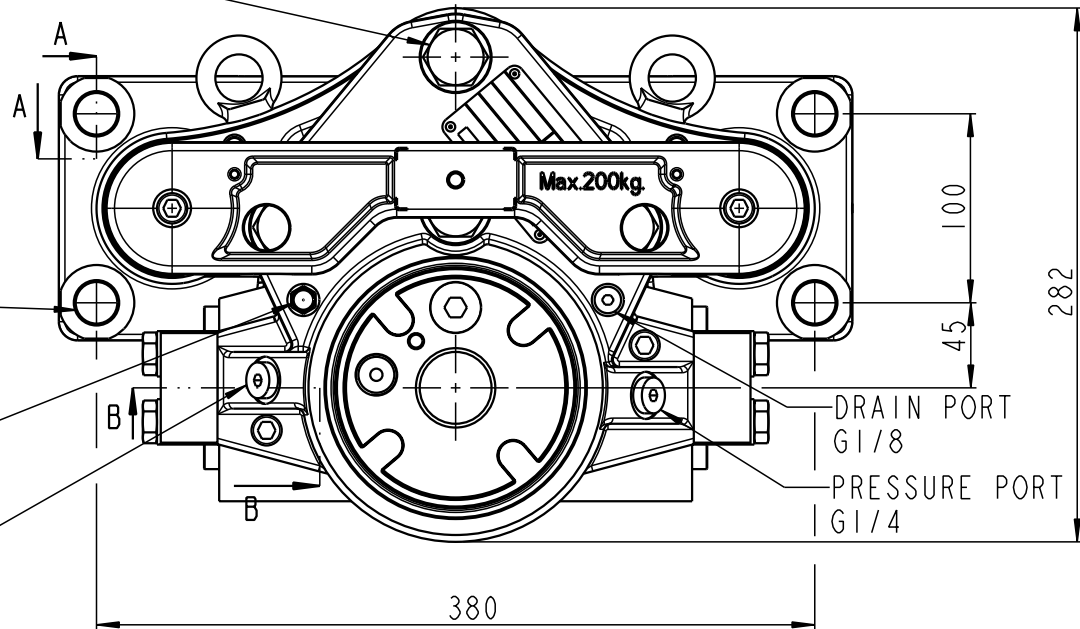
BRAKE DISC THICKNESS = 20-40  
 BRAKE CAN MOVE ON SHAFTS:  
 10 UPWARDS AND 5 DOWNWARDS  
 WITHOUT POSITIONING SYSTEM

COUNTER BORE  
 $\varnothing 40$  (4x)



DETAIL A  
 SCALE (1:2)

- FOR BRAKES UP TO  
 AND INCL. BSFI 350:  
 BOLTS M20 CLASS 8.8  
 $M_v = 305 \pm 20\text{Nm}$   
 WITH MoS2
- FOR BRAKES LARGER  
 THAN BSFI 350:  
 BOLTS M20 CLASS 10.9  
 $M_v = 430 \pm 20\text{Nm}$   
 WITH MoS2



- $\varnothing 22$  (4x) FOR  
 M20 CLASS 8.8 (4x)  
 $M_v = 305 \pm 20\text{Nm}$   
 WITH MoS2  
 (NOT INCLUDED IN BRAKE)

- DRAIN PORT  
 G1/8
- PRESSURE PORT  
 G1/4

- DRAIN PORT  
 G1/8
- PRESSURE PORT  
 G1/4

BRAKE CAN MOVE ON SHAFTS:  
 WITHOUT POSITIONING SYSTEM MOUNTED: 10mm UPWARDS AND 5mm  
 DOWNWARDS FROM NOMINAL MOUNTING DIMENSION (90)  
 WITH STANDARD POSITIONING SYSTEM MOUNTED: 2mm UPWARDS AND  
 1/2 AIR GAP DOWNWARDS FROM NOMINAL MOUNTING DIMENSION (90)  
 C = BRAKE DISC THICKNESS  
 MOUNTING DRAWING, SEE DRAWING: 490-2334  
 WEIGHT: APPROX.81 kg INCL. BRAKE PADS

TOLERANCES FOR INTERNAL AND EXTERNAL RADII, ANGLES AND CHAMFERS ACCORDING TO: ISO 2768 - mK		ALL DIMENSIONS IN mm	DRAWING STATUS
DRAWN BY RRH		DESCRIPTION BSFI 300-MSXXX-200	<b>Under Review</b>
DATE 09-09-2000			
DRAWING NO. 490-2052		REVISION F	SCALE 1:4 (A3)
SVENDBORG BRAKES A REGAL REXNORD BRAND		SHEET 1 OF 1 SHEETS	

SVENDBORG BRAKES RESERVES THE RIGHT TO REVISE THIS DOCUMENT WITHOUT PRIOR NOTIFICATION OR OBLIGATION

RELEASED  
 by randa.juma