

# Hydraulic Power Unit Port Crane



Medium  
Tank - 6L with level glass



Small  
Tank - 3L with level glass



Large  
Tank - 25L with level glass

## DESCRIPTION

Hydraulic systems from Svendborg Brakes are designed to work in heavy duty industrial applications. They feature a number of advantages:

- Fast braking & retraction time
- Redundant return valves – ensure a fast and safe operation
- Hand pump for manual release of brake in case of power failure
- Safe manual opening for crane lowering
- Reliable closed loop system with no external piping on the hydraulic systems
- High grade / high pressure alloyed aluminium control block
- Standard components – spare parts always in stock
- Low power consumption on electrical motor - 0,75 kW motor
- Pressure switch - accumulator storage - prevent start and stop
- Gear pump - less sensitive to oil impurities
- 10 micron in-line oil filter
- 2/2 ways seat valves - reduce risks of internal leakage & numbers of start / stop
- 10 micron air breather
- Oil temp. & level switch. warning if too high oil temp. & too low oil level
- Several test points on the systems by means of Minimesse® couplings

**APPLYING BRAKE**

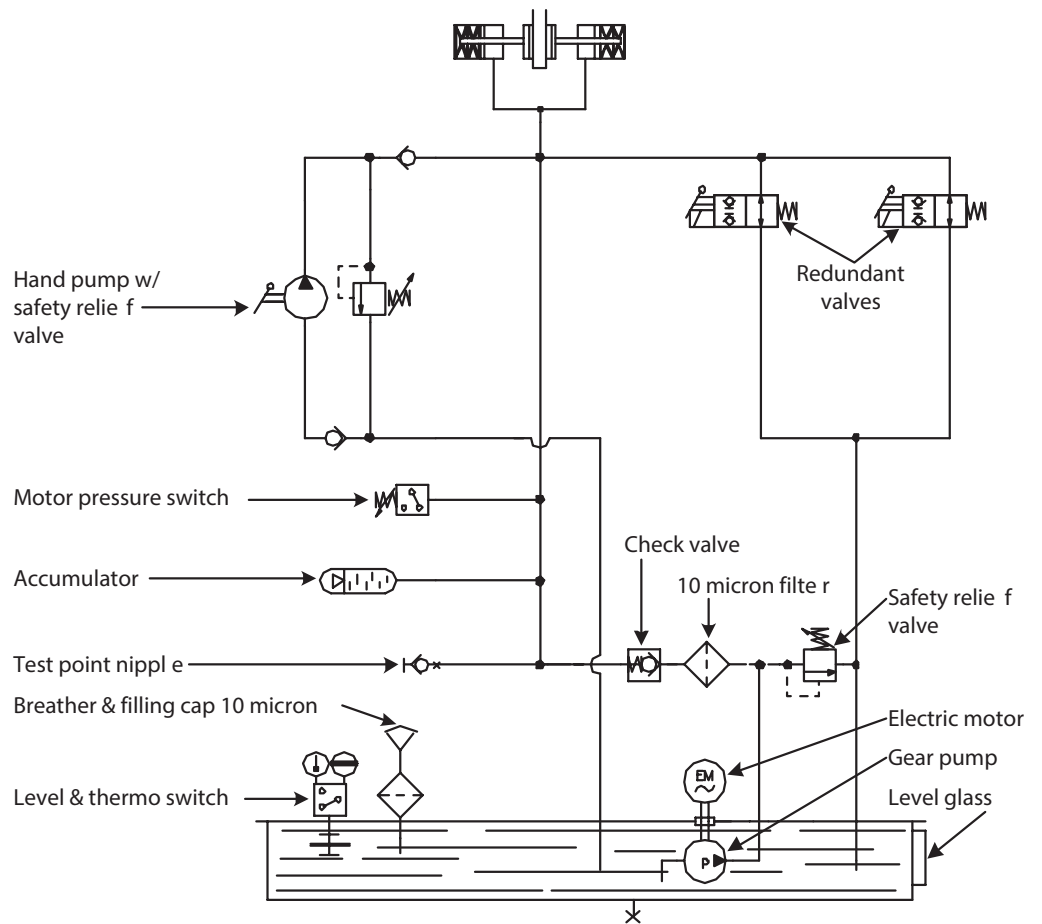
Brake is applied on command or at power failure. Power is disconnected to the valves. Oil pressure is dumped from brake to tank applying the brake. Pressure will be maintained in the accumulator ready for next quick start operation

**QUICK BRAKE CONTACT**

The oil is dumped to the tank through both dump valves to ensure a fast and secure operation even if one valve should fail

**OPERATION IN CASE OF POWER FAILURE**

In case of malfunction in main energy system, the system can be pressurized by using the hand pump. This makes it possible to release the brakes manually



## SPECIFICATIONS

### Typical motor voltages:

#### AC 50Hz:

- 1 x 230V
- 3 x 400V
- 3 x 500V
- 3 x 690V

#### AC 60Hz:

- 1 x 110V, 3 x 208
- 3 x 575V
- Motors voltage tolerance +/- 10%
- Power needed: 0,75kW

### Possible solenoid voltages:

- DC: 12V, 24V, 48V
- AC: 110V, 230V

### Power needed:

- 19W per solenoid

### Oil tank sizes:

- 3 & 6 & 25 liter

### Ambient temperature limits:

- -20 grader C ..... +40oC
- -4 grade oF ..... +104oF

### Weight:

- Approx. kilograms: Small: 36 | Medium: 40 | Large: 60
- Approx. pounds: Small: 79 | Medium: 88 | Large: 132

### Protection class for electrical:

- components: IP55

### Further options:

- Quick opening valve
- Tank heater
- Cabinet
- Customized hydraulic unit
- Automatic lowering with or without external power supply