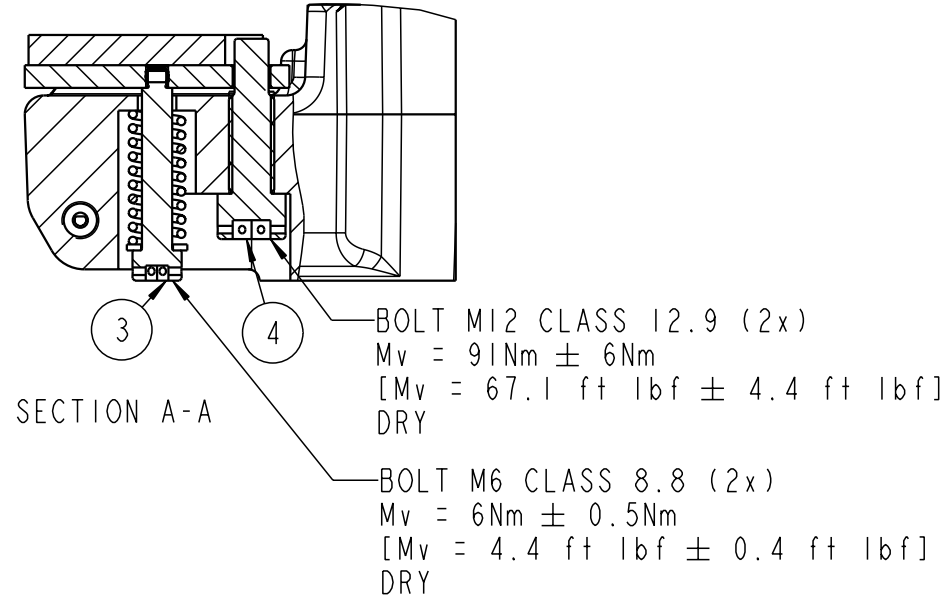
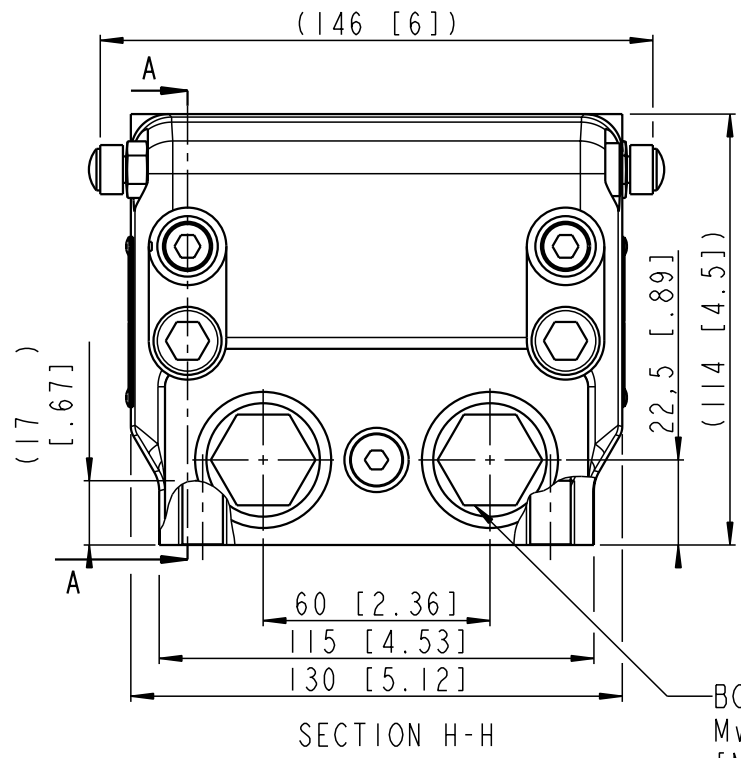
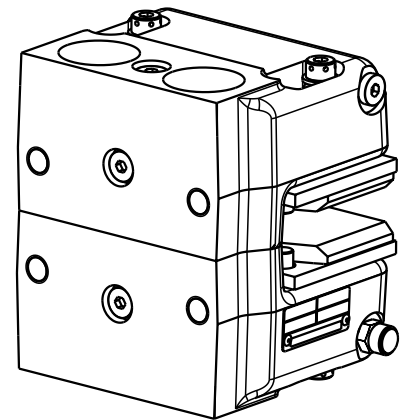
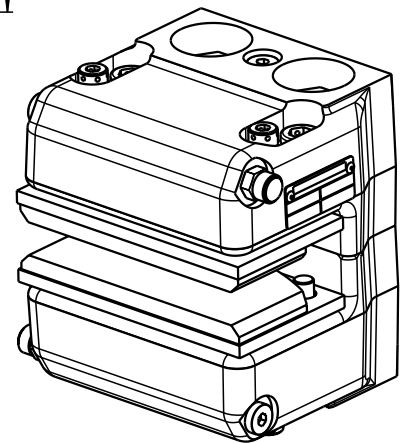
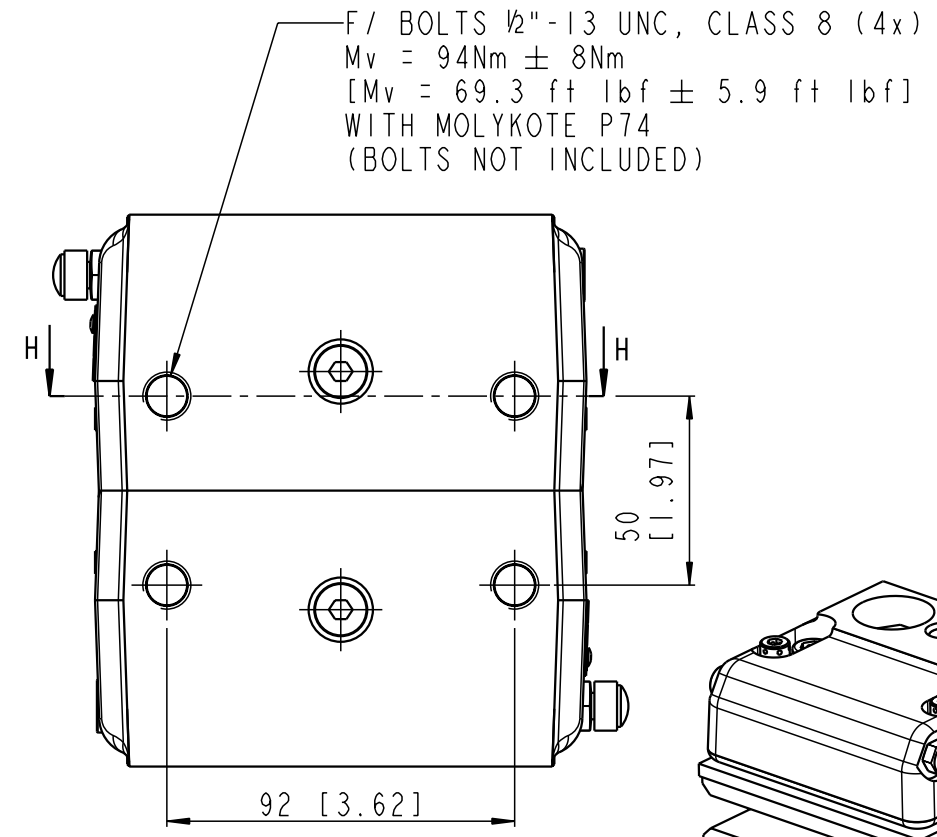
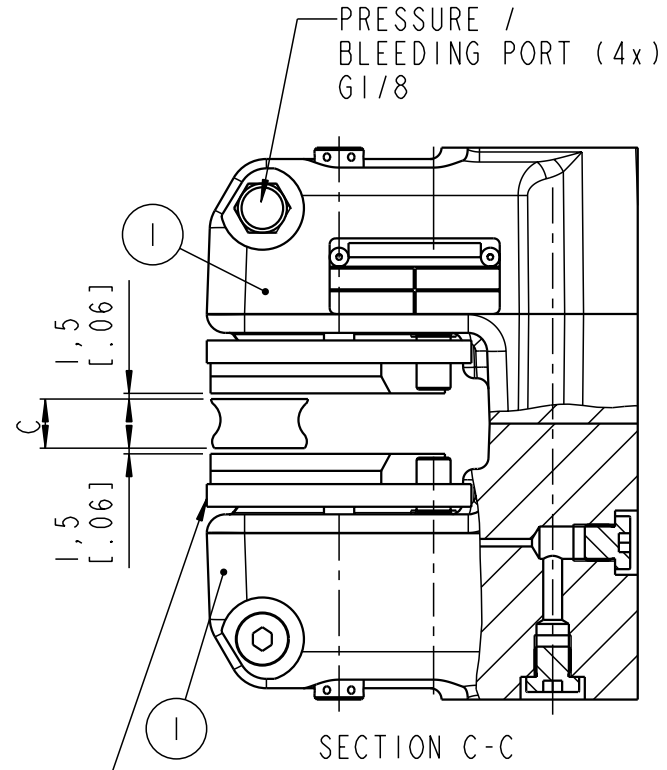
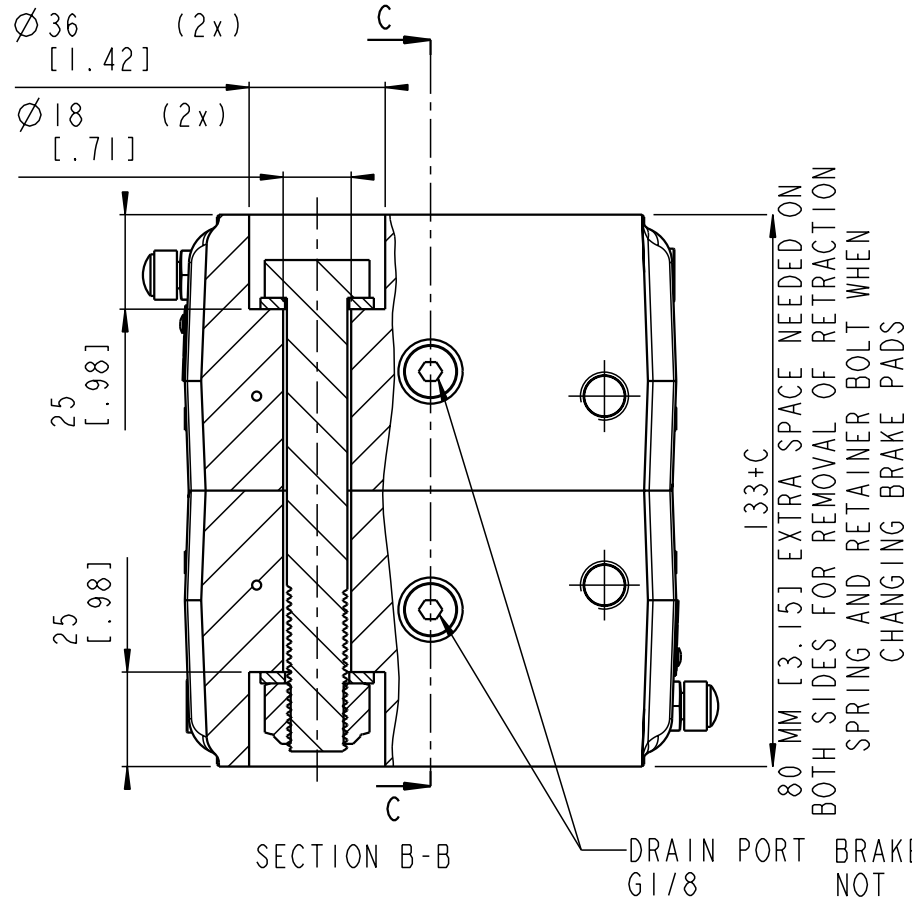


REV. D 98298 SFR 05.01.2016  
 REV. E 98522 SFR 15.04.2016  
 REV. F 102881 SDE 24.08.2023



BOLTS M16 CLASS 10.9 (2x)  
 Mv = 220Nm ± 15Nm  
 [Mv = 162.3 ft lbf ± 11.1 ft lbf]  
 WITH MOLYKOTE P74

MAX. PRESSURE: 165 BAR  
 DISC THICKNESS [C]: 13 MM  
 WEIGHT: APPROX. 11 kg

|  |  |   |   |
|--|--|---|---|
| TOLERANCES FOR INTERNAL AND EXTERNAL RADII, ANGLES AND CHAMFERS ACCORDING TO:<br>ISO 2768 - mK |  | ALL DIMENSIONS IN mm  | DRAWING STATUS                                  |
| DRAWN BY RCH<br>DATE 11.05.2011  |  | DESCRIPTION<br>BSAB 50-S13-202<br>4x 1/2" - 13 UNC MOUNTING | <b>Released</b><br>REVISION F<br>SCALE 1:2 (A3) |
| A REGAL REXNORD BRAND  |  | DRAWING NO.<br>490-4430-802                                 | SHEET 1 OF 1 SHEETS                             |