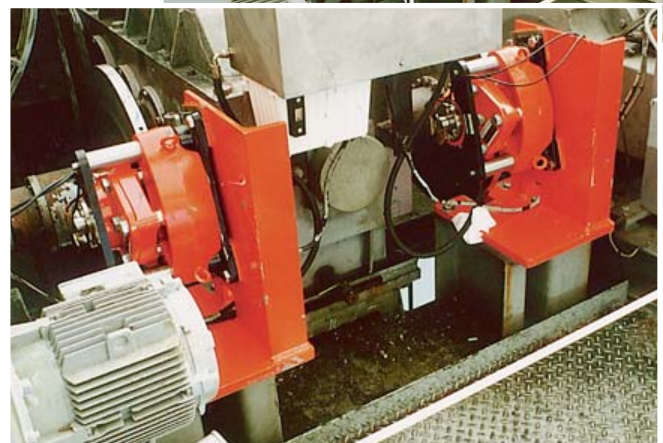
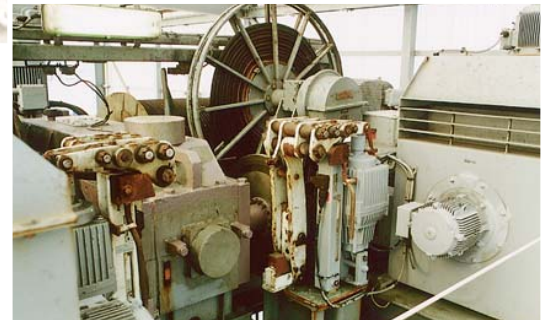
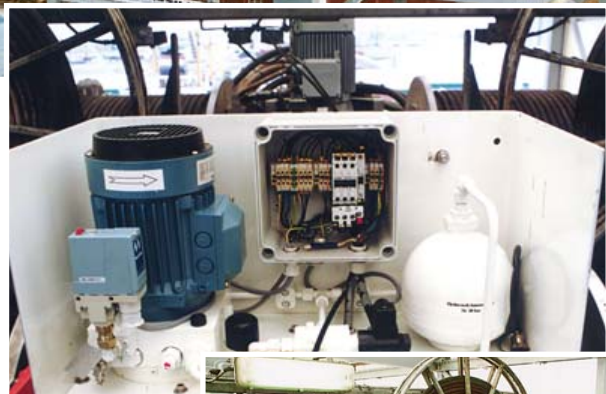


Crane Reference

Germany



SCOPE

Because of corrosion problems with existing disc brakes, Svendborg Brakes was chosen as the supplier of new brakes. In regard to the high humidity and salt contents in the air, the solution chosen was 2 x BSFH 330 Monospring off-shore brakes.

The “quick-start” hydraulic pump is a seawater resistant version.

Together with the Svendborg Brakes calipers it provides an extremely fast response time for the brake system.