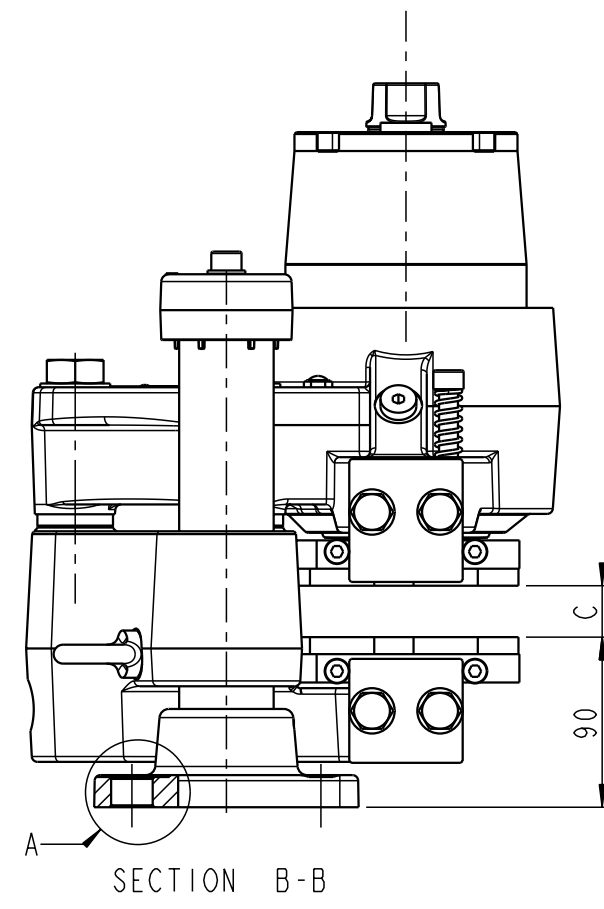
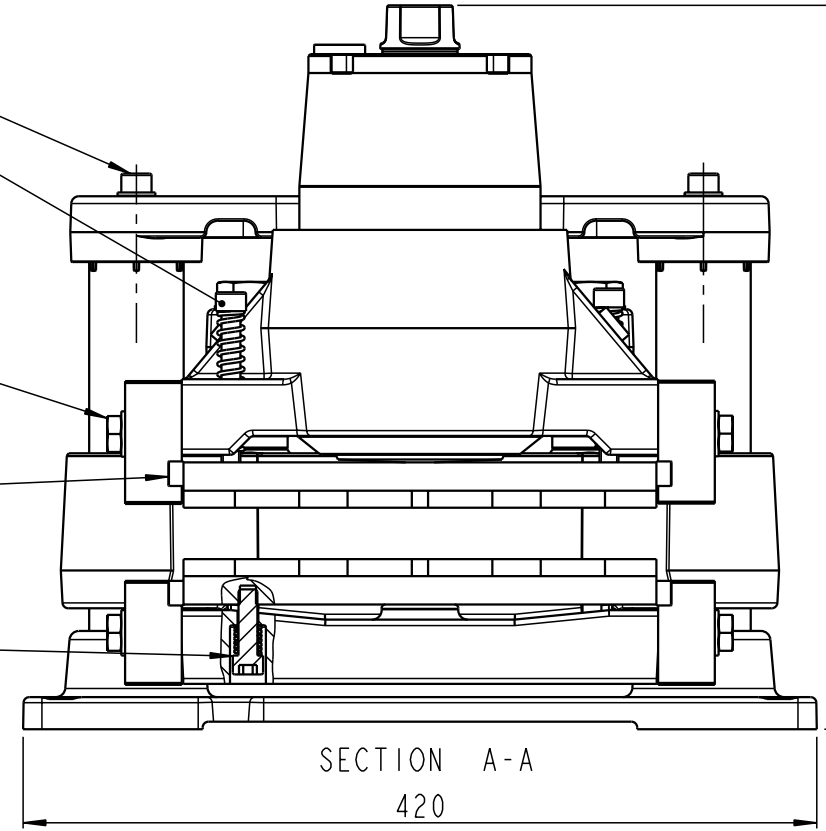
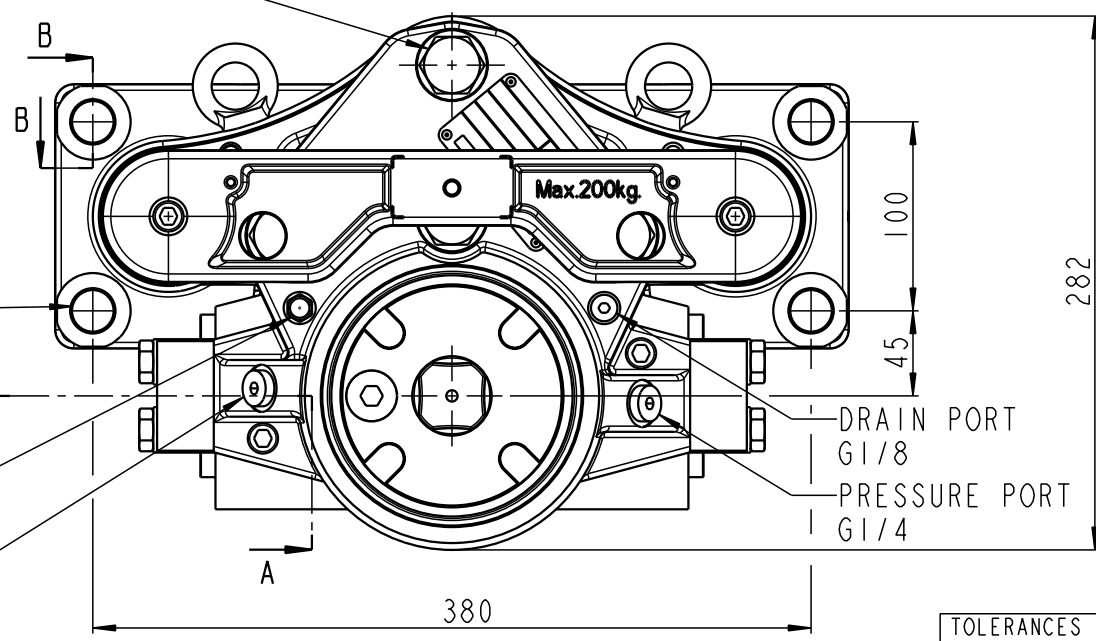


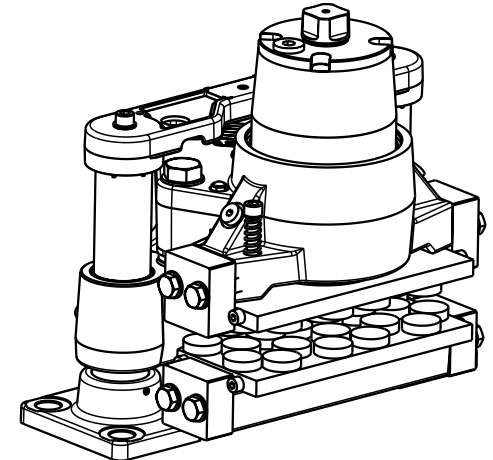
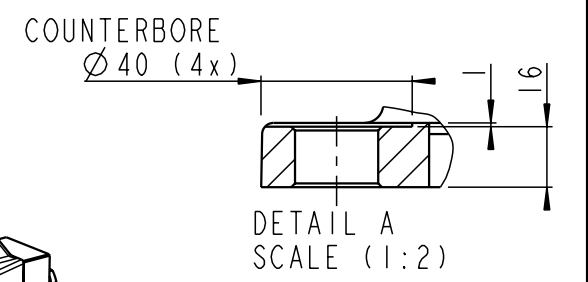
- BOLTS M10 CLASS 8.8
Mv= 44 ± 6Nm
DRY
- BOLTS M10 CLASS 8.8 / A2 (2x)
Mv= 27 ± 2Nm
DRY
- BOLTS M12 CLASS 10.9
Mv= 91 ± 8Nm
WITH MoS2
- BOLTS M8 CLASS 8.8
Mv= 23 ± 2Nm
DRY
- BOLTS M10 CLASS 8.8 / A2 (2x)
Mv= 27 ± 2Nm
DRY




- FOR BRAKES UP TO AND INCL. BSFI 350:
BOLTS M20 CLASS 8.8
Mv= 305 ± 20Nm
WITH MoS2
- FOR BRAKES LARGER THAN BSFI 350:
BOLTS M20 CLASS 10.9
Mv= 430 ± 20Nm
WITH MoS2



- Ø22 (4x) FOR BOLTS M20 CLASS 8.8 (4x)
Mv= 305 ± 20Nm
WITH MoS2
(NOT INCLUDED IN BRAKE)
- DRAIN PORT G1/8
- PRESSURE PORT G1/4



BRAKE CAN MOVE ON SHAFTS:
WITHOUT POSITIONING SYSTEM MOUNTED: 10mm UPWARDS AND 5mm DOWNWARDS FROM NOMINAL MOUNTING DIMENSION (90)
WITH STANSARD POSITIONING SYSTEM MOUNTED: 2mm UPWARDS AND 1/2 AIR GAP DOWNWARDS FROM NOMINAL MOUNTING DIMENSION (90)
C = BRAKE DISC THICKNESS
MOUNTING DRAWING, SEE DRAWING: 490-2334
WEIGHT: APPROX. 85 kg INCL. BRAKE PADS

TOLERANCES FOR INTERNAL AND EXTERNAL RADII, ANGLES AND CHAMFERS ACCORDING TO: ISO 2768 - mK		ALL DIMENSIONS IN mm	DRAWING STATUS
DRAWN BY RRH		DESCRIPTION BSFI 300-MSXXS-300	Released
DATE 09-Sep-00			
DRAWING NO. 490-1870		REVISION E	SHEET 1 OF 1 SHEETS
		SCALE 1:4 (A3)	